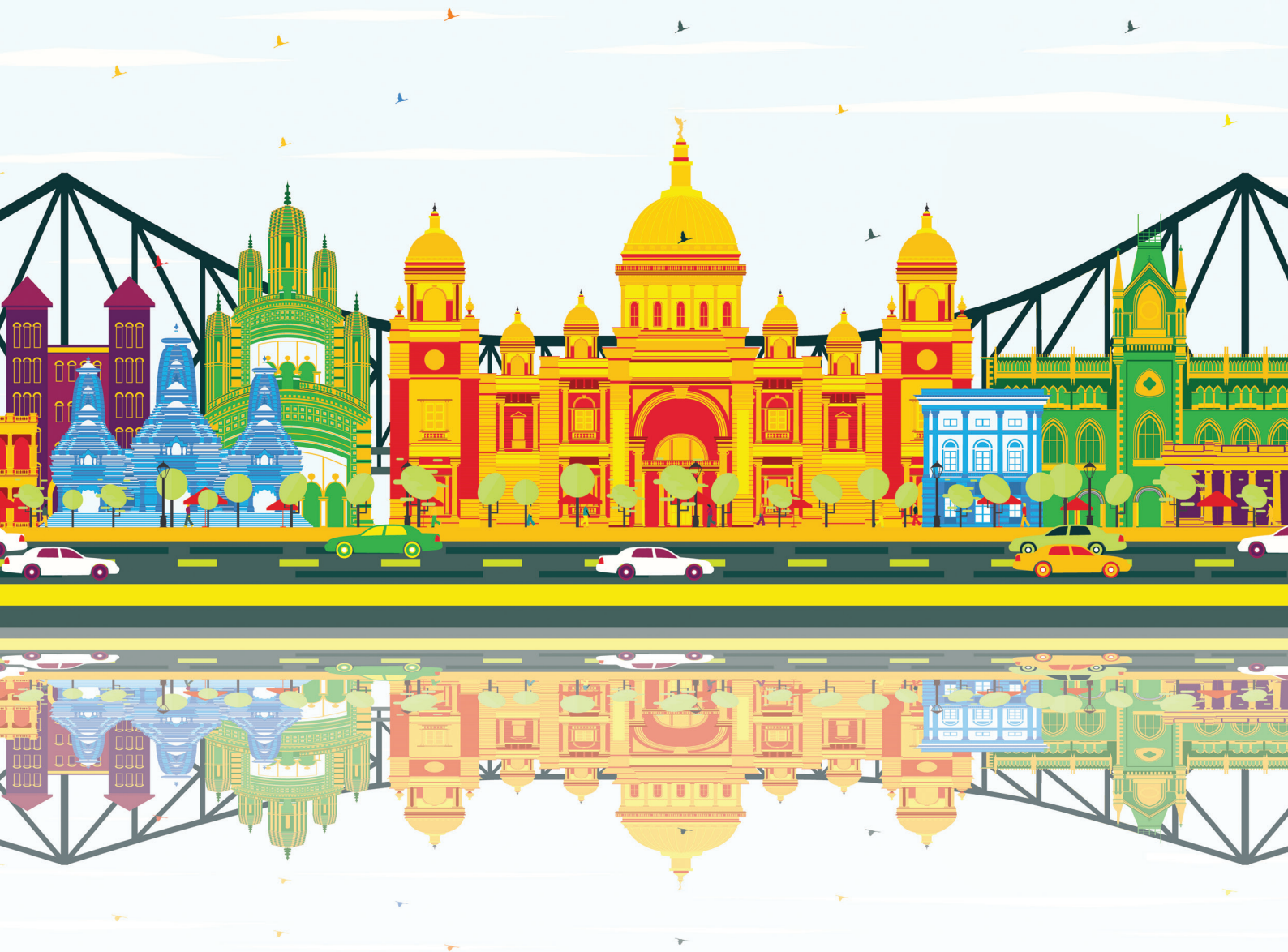




IEEE ISBI 2022

International Symposium on Biomedical Imaging

28-31 March 2022, ITC Royal Bengal, Kolkata, India





ITC Royal Bengal

9,290 sq. m of Meeting and Banqueting Area **22** Meeting Rooms **693** Rooms, Suites and Services Apartments **15** Dining Outlets **5** Premium Lounges & Spa Garden and Poolside

Palal, II, III

3 Rooms, each of 214 sq. m
175 PAX Tutorials, Challenges

Bengal Stateroom 4 & 5

3 Rooms, each of 214 sq. m
175 PAX Tutorials, Challenges

Bengal Stateroom (1,2 & 3)

1 Room of size
1071 sq. m
1200 PAX
Plenary, Reception

Eastern Court 1 & 2

2 Rooms, each of 134 sq. m
130 PAX Oral Sessions, Tutorials

Corridors and Foyer Bn SR: 849 sq. m,

East Crt: 129 sq. m, Foyer I:
119 sq. m, Foyer II: 97 sq. m,
Poster, Expo

Meeting Rooms

5 Rooms, each of 33-46 sq. m
12-25 PAX
Tutorials, Challenges



Why be an ISBI 2022 Sponsor?

- **Partner** with IEEE's flagship conference on medical and biological imaging, with a large scope that covers image acquisition, formation, and processing
- **First** time happening in India
- **Encourage** the profession of biomedical imaging to create new technological developments for humanity
- Unique opportunity to **interact** with the 800+ participants across continents from academia, clinics and hospitals, as well as industrial R&D departments
- **Showcase and promote** your existing and newly developed products with a global network of biomedical imaging professionals
- **Direct interaction** with top leaders in medical imaging, who are regularly consulted by their home institutions (e. g. a government organizations, university hospital or medical center) for purchasing of new equipment
- **Opportunity to** recruit the best and brightest talents and engage with your organization
- **Establishing collaborations** with young and energetic startups and entrepreneurs

Website:

<https://biomedicalimaging.org/2022/committee/>

Topics of Interest

- Image formation and reconstruction
- Image processing and analysis
- Dynamic imaging, visualization, image quality assessment
- Machine learning for big image data
- Physical, biological and statistical modeling

Who will participate?

- Professors
- Clinicians
- Biomedical Researchers
- Graduate Students
- Policy makers
- Industry Professionals



Program at a Glance

Day 1

9:00 - 10:00	Special Session, Challenges, Tutorial	Clinical Day Radiology
10:00 - 11:00	Coffee Break	
11:00 - 13:00	Special Session, Challenges, Tutorial	
13:00 - 14:00	Lunch Break	
14:00 - 15:00	Plenary	Clinical Day Pathology
15:00 - 16:00	Special Session, Challenges, Tutorial	
16:00 - 17:00	Coffee Break	
17:00 - 19:00	Special Session Challenges, Tutorial	
19:00 - 22:00	Welcome Reception and Dinner	

Day 2

9:00 - 10:00	Plenary
10:00 - 11:00	Coffee Break
11:00 - 12:00	Posters
12:00 - 13:00	Special Session, Oral Presentations
13:00 - 14:00	Lunch Break
14:00 - 15:00	Plenary
15:00 - 16:00	Posters
16:00 - 17:00	Coffee Break
17:00 - 19:00	Special Session Oral Presentations
19:00 - 22:00	Cultural Events and Dinner

Expo Time

Expo Time



Day 3

9:00 - 10.00	Plenary
10.00 - 11.00	Coffee Break
11.00 - 12.00	Posters
12.00 - 13.00	Special Session, Oral Presentations
13.00 - 14.00	Lunch Break
14.00 - 15.00	Plenary
15.00 - 16.00	Posters
16.00 - 17.00	Coffee Break
17.00 - 19.00	Special Session Oral Presentations
19.00 - 22.00	Cultural Events and Dinner

Day 4

9:00 - 10.00	Plenary
10.00 - 11.00	Coffee Break
11.00 - 12.00	Special Session, Oral Presentations
12.00 - 13.00	Awards, Closing
13.00 - 14.00	Lunch Break
14.00 - 15.00	Special Session, Challenges, Tutorial
15.00 - 16.00	Coffee Break
16.00 - 17.00	Special Session Challenges, Tutorial
17.00 - 19.00	Coffee Break Events
19.00 - 22.00	Speed Networking (Day 2 – 4)

Lunch Break Events

Lunch with Leaders (Day 2-4)

Career Date Lunch (Days 3-4)

Career Date Lunch for Women (Days 2-3)





Women in Imaging (WII) @ ISBI 2022

First ever Women in Imaging event being organized as part of ISBI

- To raise visibility of female medical imaging researchers

Invite all female students, post-docs, junior researchers and faculty

- To socialize & connect over a mutual interest in biomedical imaging

Lunch networking session with mentorship roundtables

- Opportunity to discuss and get advice from seniors on

• Research Directions	• Work Life Balance
• Working Experience	• Career Pathways
• Career Transitions	• Initiating collaborations

Technical session with invited talks & panel session

- Featuring keynote speakers from both academia and industry
- Representing exceptional leaders and role models in the field
- Live panel discussion and Q/A session with speakers & mentors



ISBI 2022 Student and Young Professional Activities Events



Speed Networking

30-minute coffee break interactions with multiple experts.



Lunch with Leaders

90-minute dining event will feature three experts from academia and industry.



Career Date Lunch

Lunch time interaction with an expert based on research and career choices.



“Manuscript Writing from ISBI to Transactions” Workshop

30-minute coffee break interactions with multiple experts.



“Grant Writing for the Young Investigator” Workshop

This event will feature three speakers who will give brief 20 minutes presentations on writing effective research grants.



“Imaging Career for Biomedical Engineers” Workshop

This event will feature five notable speakers from industry, who will provide career guidance.



Sponsoring Options

Main Sponsorships	Diamond	Platinum	Gold	Silver	Bronze
	Booth	Program Book Advertisement Space	Logo on Signages	Complementary Registration	Prints and Website Acknowledgement
	Networking & Career Dates	Exhibitor only passes			

Social Events Linked Sponsorships	Welcome Dinner	Banquet Dinner	Lunch	Coffee Break	Clinical Day
	Reserved Table	Program Book Expand Space	Logo on Signages	Complementary Registration	Prints and Website Acknowledgement
	Speed Networking	Exhibitor only passes			

Other Sponsorships	Standard Booth	Startup Desk	Travel Grant	Challenge Award	Paper Award
	USB Proceedings	Bag, Lanyard, Namebadge	App	Speaker Travels	TC Meetings



Main Sponsorships

	Diamond	Platinum	Gold	Silver	Bronze
	₹ 23.50 L US\$ 32,000	₹ 20.00 L US\$ 27,000	₹ 7.50 L US\$ 10,000	₹ 3.75 L US\$ 5,000	₹ 2.30 L US\$ 3,000
Booth	Standard Booth	Standard Booth	Standard Booth	Table Top Booth	Table Top Booth
Program Book Advertisement Space	Full Page	Full Page	Half Page	Half Page	Quarter Page
Logo on Signages	✓	✓	✓	✓	✓
Prints and Website Acknowledgement	✓	✓	✓	✓	✓
Complement Registration	3	2	1	✗	✗
Networking & Career Dates	1 Coffee Table x 5 Session 2 Dining Table x 2 Session	1 Coffee Table x 4 Session 1 Dining Table x 2 Session	1 Coffee Table x 3 Session 1 Dining Table x 2 Session	1 Coffee Table x 2 Session 1 Dining Table x 1 Session	1 Coffee Table x 1 Session 1 Dining Table x 1 Session
Exhibitor only passes	3	3	2	1	1

Taxes extra as applicable per laws in India, currently GST @ 18%.



Social Events Linked Sponsorships

	Welcome Dinner	Day 2/3 Dinner (each)	Day 1/2/3/4 Lunch (each)	Coffee Break (each)	Clinical Day (each)
	₹ 22.40 L US\$ 30,000	₹ 19.20 L US\$ 26,000	₹ 19.20 L US\$ 26,000	₹ 2.50 L US\$ 3,400	₹ 1.00 L US\$ 1,350
Reserved Dining Table	2 in sponsored event	2 in sponsored event	2 in sponsored event	1 in sponsored event	X
Program Book Advertisement Space	Full Page	Full Page	Full Page	Half Page	Quarter Page
Logo on Signages	✓	✓	✓	✓	✓
Prints and Website Acknowledgement	✓	✓	✓	✓	✓
Complement Registration	2	2	2	X	X
Speed Networking	1 Coffee Table x 5 Session	1 Coffee Table x 4 Session	1 Coffee Table x 4 Session	X	X
Exhibitor only passes	3	3	3	1	1

Taxes extra, currently GST @ 18%. Pay at this rate to the Hotel or service vendor directly.



Expo Booths

Prizes

	Standard Booth ¹	Startup Desk ¹	Travel Grant ²	Challenge Award ²	Paper Award ²
	₹ 6.00 L US\$ 8,000	₹ 1.15 L US\$ 1,500	₹ 75,000 US\$ 1,000	₹ 75,000 US\$ 1,000	₹ 1.00 L US\$ 1,350
Booth	Standard Booth	Table Top Booth	X	X	X
Program Book Advertisement Space	Half Page	Quarter Page	X	X	Quarter Page
Logo on Signages	✓	✓	✓	✓	✓
Prints and Website Acknowledgement	✓	✓	✓	✓	✓
Complement Registration	1	1	1	X	X
Networking & Career Dates	1 Coffee Table x 3 Session 1 Dining Table x 1 Session	1 Coffee Table x 1 Session	X	X	X
Exhibitor only passes	3	1	1	1	1

¹ Taxes extra, currently GST @ 18%. Does not include design customization. ² Awarded directly to the beneficiary.



Other Sponsoring Options



Taxes extra, currently GST @ 18%. Pay at this rate to the service vendor directly.



Committee

General Chairs



Jayanthi Sivaswamy
IIIT Hyderabad, India



Andrew Laine
Columbia University, USA

Program Chairs



Suyash P. Awate
IIT Bombay, India



Tanveer F. Syeda-Mahmood
IBM Almaden Research Center, USA

Local Organizing Chairs



Debdoot Sheet
IIT Kharagpur, India



Arun K. Thittai
IIT Madras, India

Finance Chair



Hardik J. Pandya
IISc Bangalore, India

